

FOR SALE

16,459 SF Industrial Building

3925 Hyde Park Blvd., Niagara Falls, NY 14305



PROPERTY HIGHLIGHTS

- Former General Contractor Property
- Industrial and/or warehouse use
- Zoned HI - Heavy Industry
- Town of Niagara location, close to Canadian border
- Almost 6,000SF office building
- Almost 11,000SF of shop and warehouse space
- 9 overhead doors; ceiling heights 12' - 16'
- 2.44 acres with fenced-in, outdoor storage lot
- Parking for approx 40 to 50 vehicles in front lot
- Shop space includes drains & 3 cranes (1/2 ton, 1 1/2 ton and 2 ton)



HANNA
COMMERCIAL REAL ESTATE
344 Delaware Ave, Suite 200, Buffalo, NY 14202



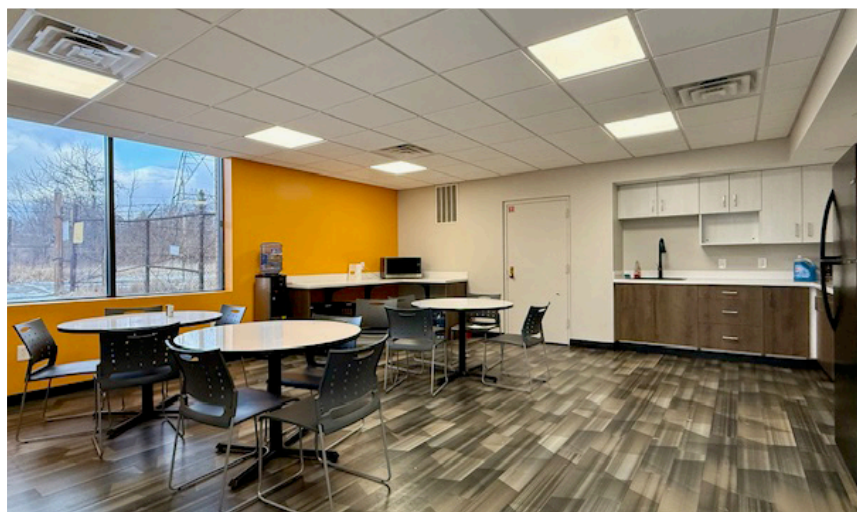
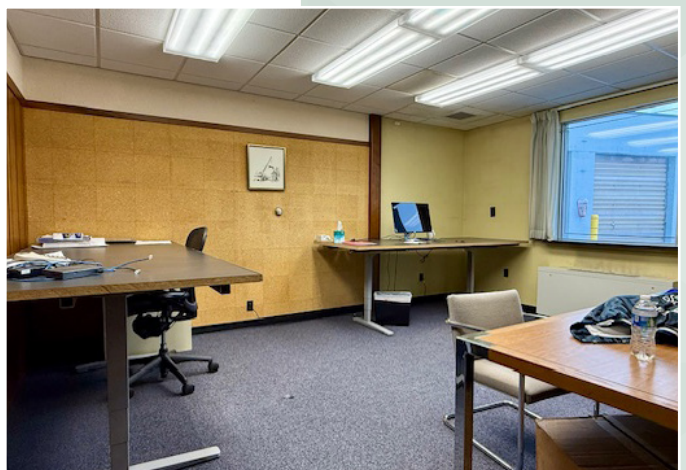
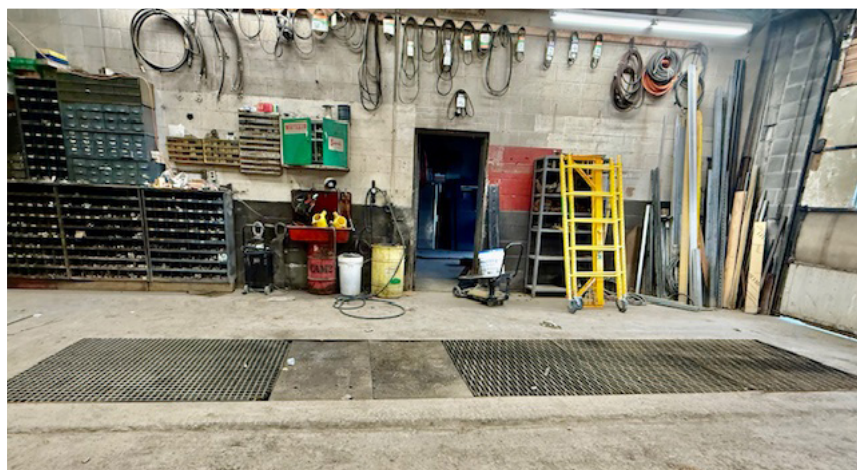
The information submitted herein is not guaranteed. Although obtained from reliable resources, it is subject to errors, omissions, prior sale and withdrawal from the market without notice. Broker has made no investigation and makes no representation of the property. Sale is subject to the approval of the U.S. Bankruptcy Court and The Diocese of Buffalo.

David Doerr
Associate Real Estate Broker
D: 716.426.0616
DavidDoerr@HannaCRE.com

FOR SALE

16,459 SF Industrial Building

3925 Hyde Park Blvd., Niagara Falls, NY 14305



HANNA
COMMERCIAL REAL ESTATE
344 Delaware Ave, Suite 200, Buffalo, NY 14202

The information submitted herein is not guaranteed. Although obtained from reliable resources, it is subject to errors, omissions, prior sale and withdrawal from the market without notice. Broker has made no investigation and makes no representation of the property. Sale is subject to the approval of the U.S. Bankruptcy Court and The Diocese of Buffalo.

David Doerr
Associate Real Estate Broker
D: 716.426.0616
DavidDoerr@HannaCRE.com