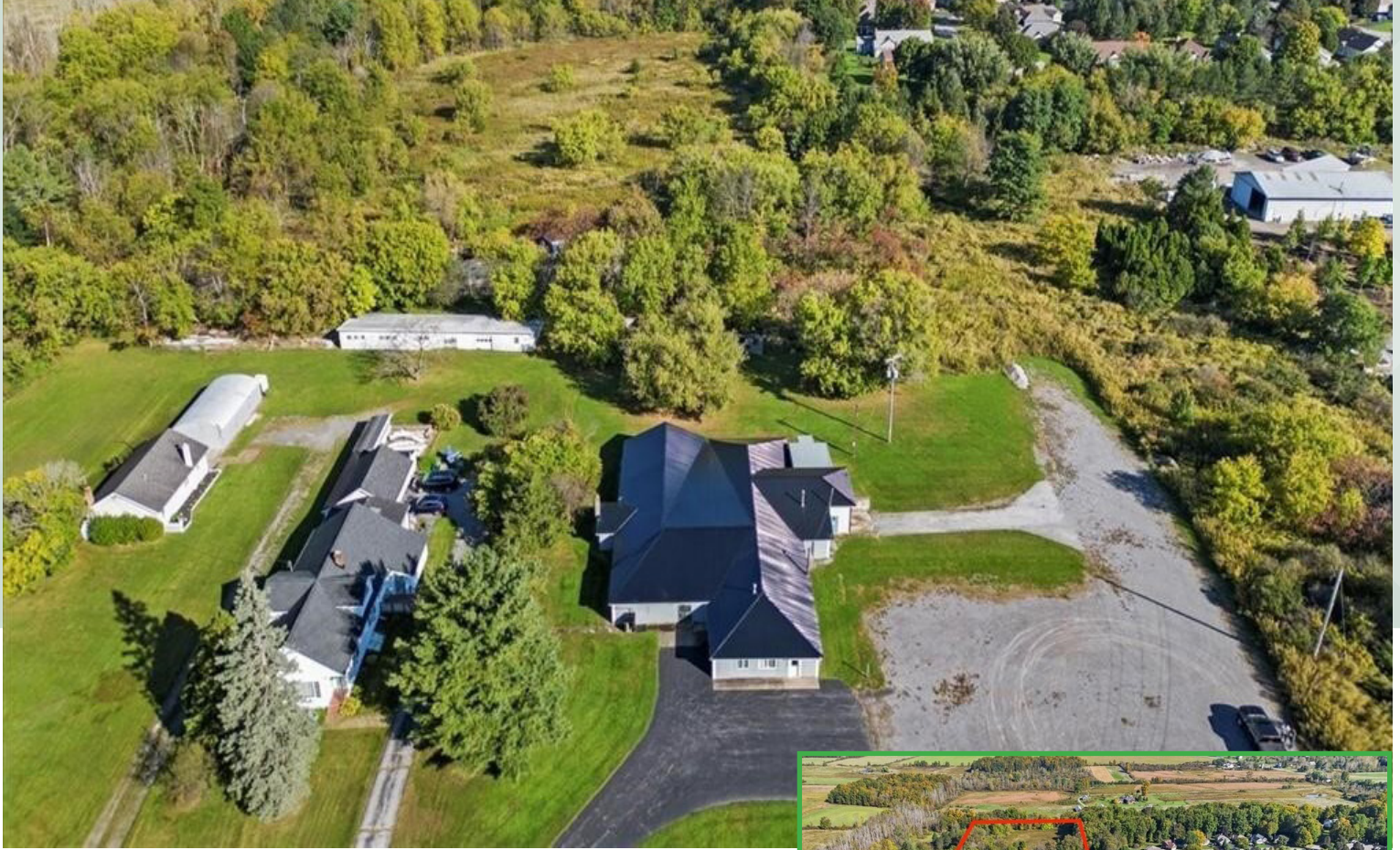


**FOR SALE**

# Development Site

3808 Rush Mendon Rd, Mendon, NY 14506



## **PROPERTY HIGHLIGHTS**

- 16.31 Acre Development Site Near Mendon Town Center
- 330 Feet Road Frontage
- Existing 4,000 SF Warehouse/Cold Storage Building with New Metal Roof (Previous Poultry Processing Use)
- Three Phase Electricity, Public Water, Natural Gas, Septic
- Three Walk-In Freezers, Three Walk-in Coolers, Tractor-Trailer Height Dock
- Numerous Commercial or Residential/Multifamily Development Potentials
- Perfect Senior Housing/Condo/Townhouse Development Site
- List Price \$399,900



217 West Ave, Suite 201, Rochester, NY 14614 1900 Empire Blvd., Suite 200, Webster, NY 14580



The information submitted herein is not guaranteed. Although obtained from reliable resources, it is subject to errors, omissions, prior sale and withdrawal from the market without notice. Broker has made no investigation and makes no representation of the property.

**Phillip Crispino**  
Associate Real Estate Broker

C: 585.755.5921

PhillipCrispino@gmail.com

**Paul Schiliro**  
Real Estate Salesperson

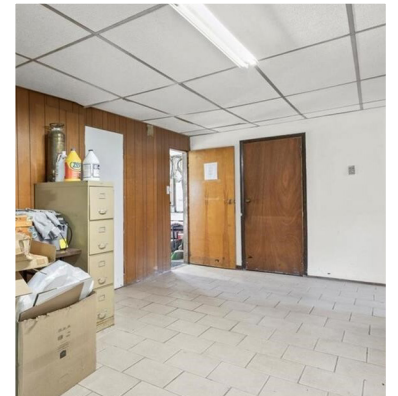
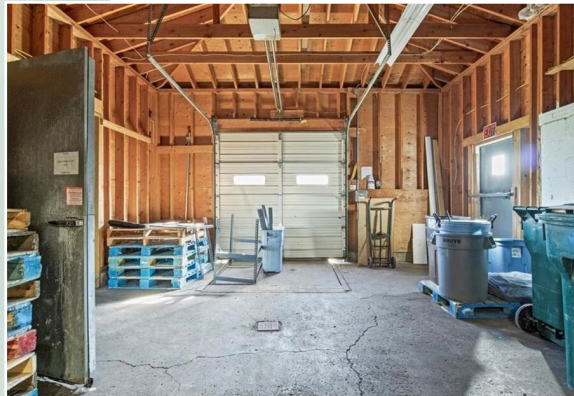
C: 585.703.0079

PaulSchiliro@HannaCRE.com

**FOR SALE**

# Development Site

3808 Rush Mendon Rd, Mendon, NY 14506



217 West Ave, Suite 201, Rochester, NY 14614 1900 Empire Blvd., Suite 200, Webster, NY 14580



**Phillip Crispino**  
Associate Real Estate Broker

C: 585.755.5921

PhillipCrispino@gmail.com

**Paul Schiliro**  
Real Estate Salesperson

C: 585.703.0079

PaulSchiliro@HannaCRE.com



The information submitted herein is not guaranteed. Although obtained from reliable resources, it is subject to errors, omissions, prior sale and withdrawal from the market without notice. Broker has made no investigation and makes no representation of the property.