

FOR LEASE

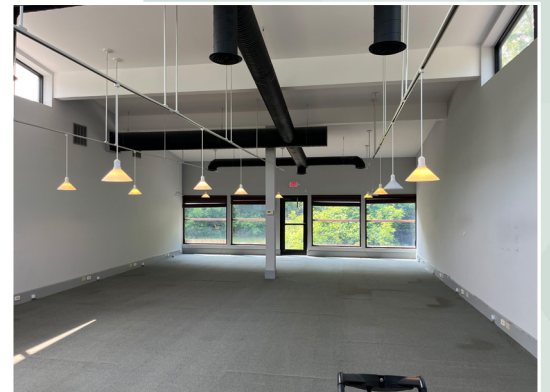
7,100 Sq. Ft. Office Building

65 Bridge Street, North Tonawanda, New York, 14120



PROPERTY HIGHLIGHTS

- 13 Private Offices
- Executive office with private bathroom
- 6 Large spaces for conference rooms or group work settings
- Secure and secluded location off a main thoroughfare in North Tonawanda on Tonawanda Island
- Green Space In the rear with concrete pad
- Ample parking spaces
- 2.5 miles to the 290



DEMOGRAPHICS:

	<u>2- Mile</u>	<u>5-Miles</u>
Population:	35,882	182,168
Households:	16,343	77,228
Average HH Income:	\$67,279	\$80,905



The information submitted herein is not guaranteed. Although obtained from reliable resources, it is subject to errors, omissions, prior sale and withdrawal from the market without notice. Broker has made no investigation and makes no representation of the property.

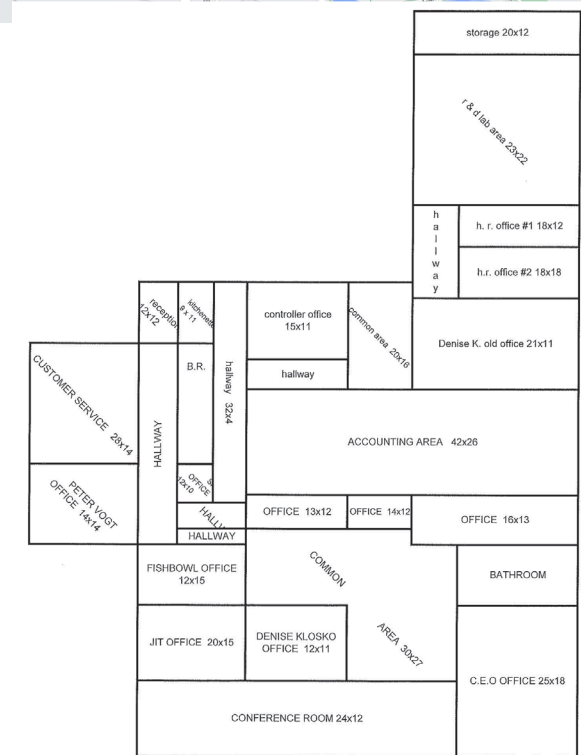
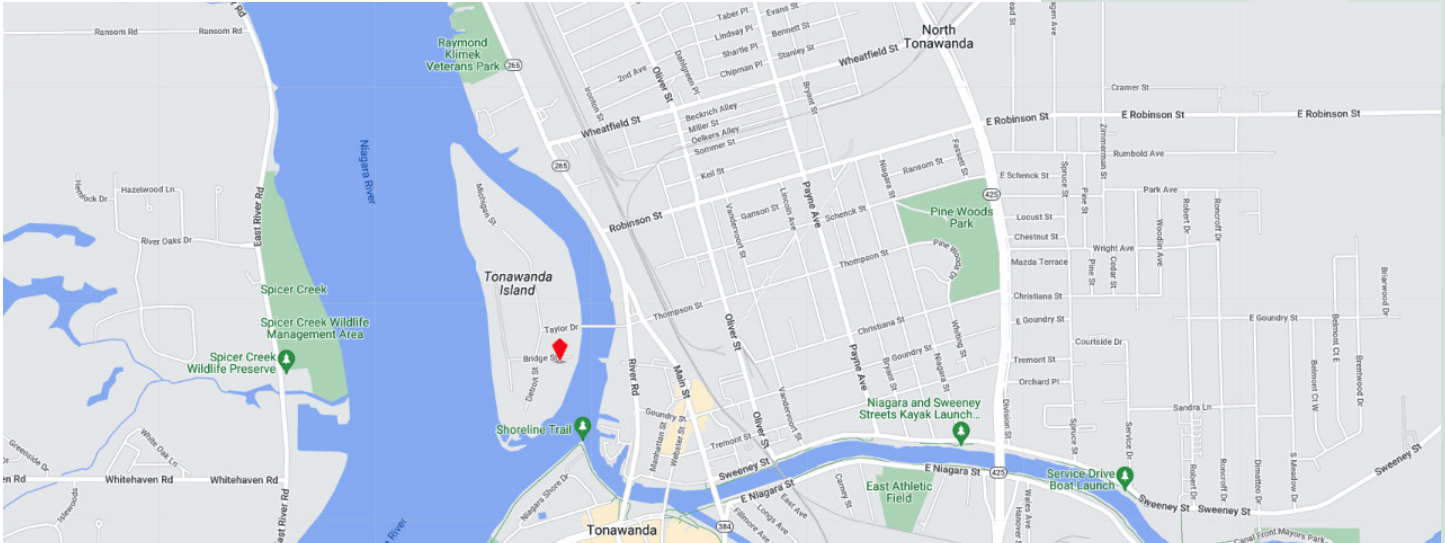
Joe Carlson
Real Estate Salesperson
C: 716.359.4445
JoeCarlson@HannaCRE.com

Richard Wadsworth
Real Estate Salesperson
C: 716.239.5764
RichardWadsworth@HannaCRE.com

FOR LEASE

7,100 Sq. Ft. Office Building

65 Bridge Street, North Tonawanda, New York, 14120



HANNA
COMMERCIAL REAL ESTATE
344 Delaware Ave, Suite 200, Buffalo, NY 14202



The information submitted herein is not guaranteed. Although obtained from reliable resources, it is subject to errors, omissions, prior sale and withdrawal from the market without notice. Broker has made no investigation and makes no representation of the property.

Joe Carlson
Real Estate Salesperson
C: 716.359.4445
JoeCarlson@HannaCRE.com

Richard Wadsworth
Real Estate Salesperson
C: 716.239.5764
RichardWadsworth@HannaCRE.com