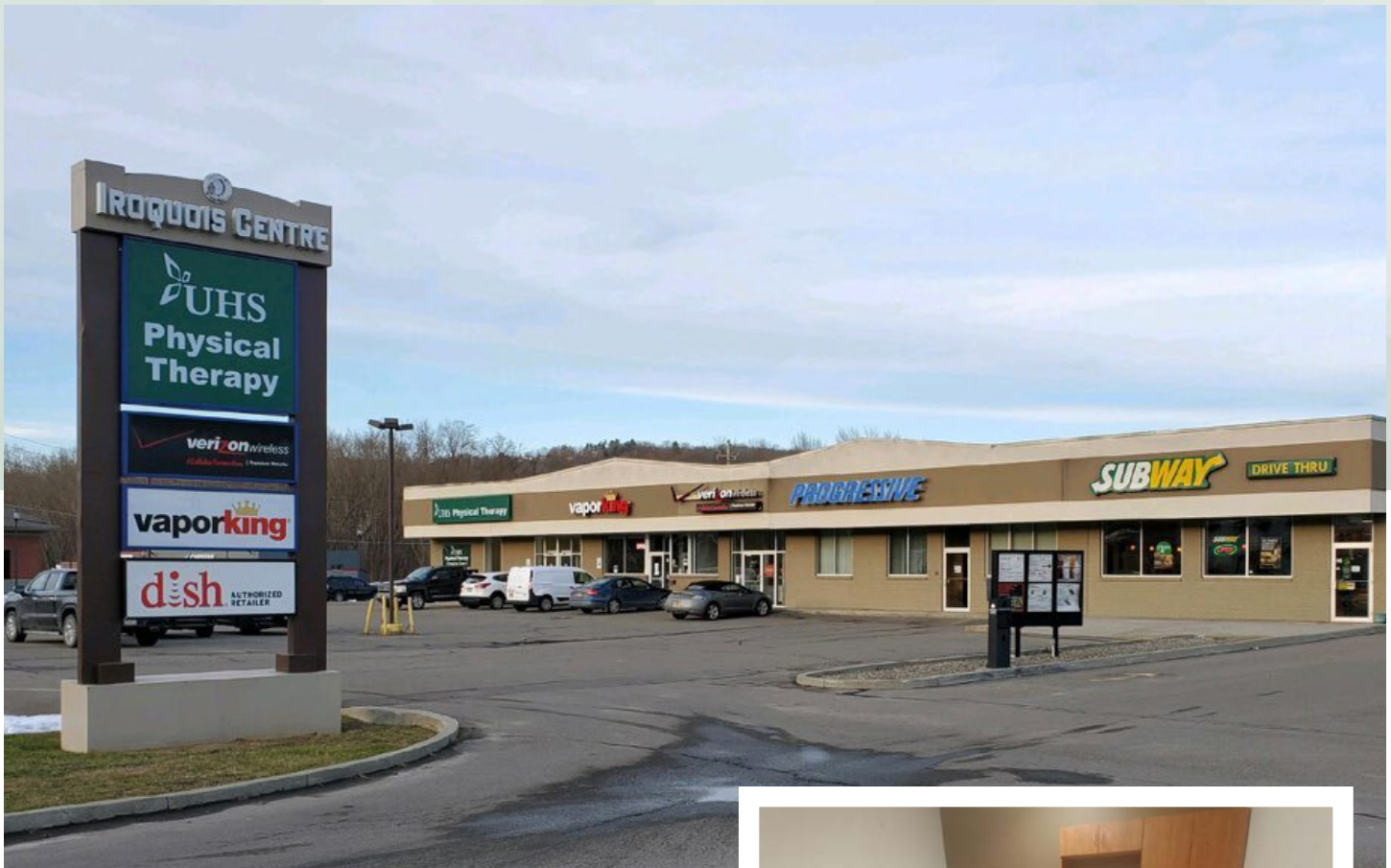


FOR LEASE

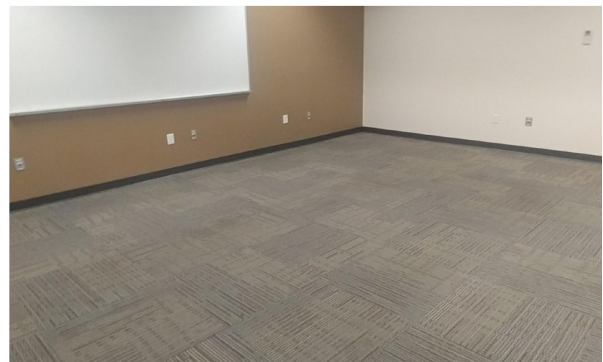
Former Progressive Space In Plaza

941-997 State Route 17C, Owego, NY 13827



PROPERTY HIGHLIGHTS

- Great visibility
- Close to three major hotels, shopping center, banks, national retailers, and restaurants
- Very close to Lockheed Martin facility - one of the area's largest employers
- Extremely well maintained and managed
- 82 Parking spaces
- Located in the "Power Mile of Owego"
- 3,237 sq. ft
- \$12.00 NNN



3630 George F. Highway Endwell, NY 13760

The information submitted herein is not guaranteed. Although obtained from reliable resources, it is subject to errors, omissions, prior sale and withdrawal from the market without notice. Broker has made no investigation and makes no representation of the property.



Karen Klecar

Licensed Real Estate Associate Broker

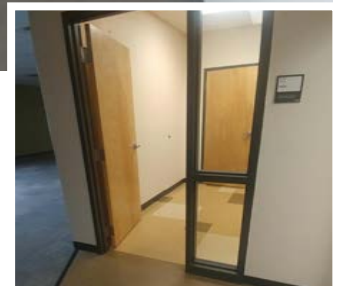
607.624.0143

KarenKlecar@hannacre.com

FOR LEASE

Former Progressive Space In Plaza

941-997 State Route 17C, Owego, NY 13827



DEMOGRAPHIC SNAPSHOT

	1 Miles	3 Miles	5 Miles
Population	835	6,813	13,261
Households	348	2,892	5,522
Median HH Income	\$70,791	\$59,184	\$62,906
Average HH Income	\$90,906	\$77,913	\$81,111
Daytime Population	3,010	9,834	15,049



3630 George F. Highway Endwell, NY 13760

The information submitted herein is not guaranteed. Although obtained from reliable resources, it is subject to errors, omissions, prior sale and withdrawal from the market without notice. Broker has made no investigation and makes no representation of the property.



Karen Klecar

Licensed Real Estate Associate Broker

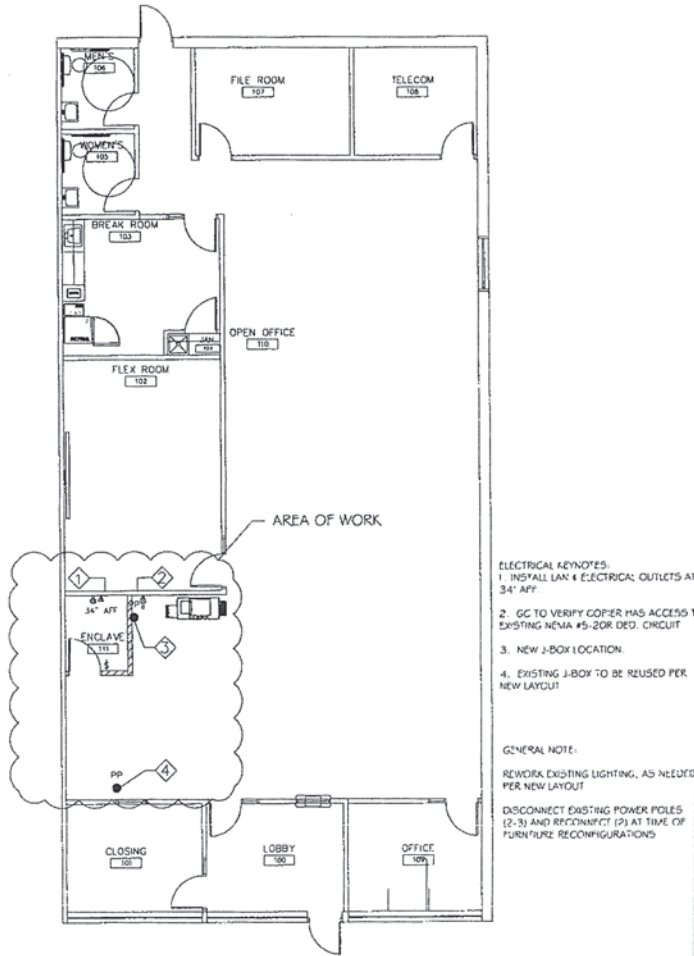
607.624.0143

KarenKlecar@hannacre.com

FOR LEASE

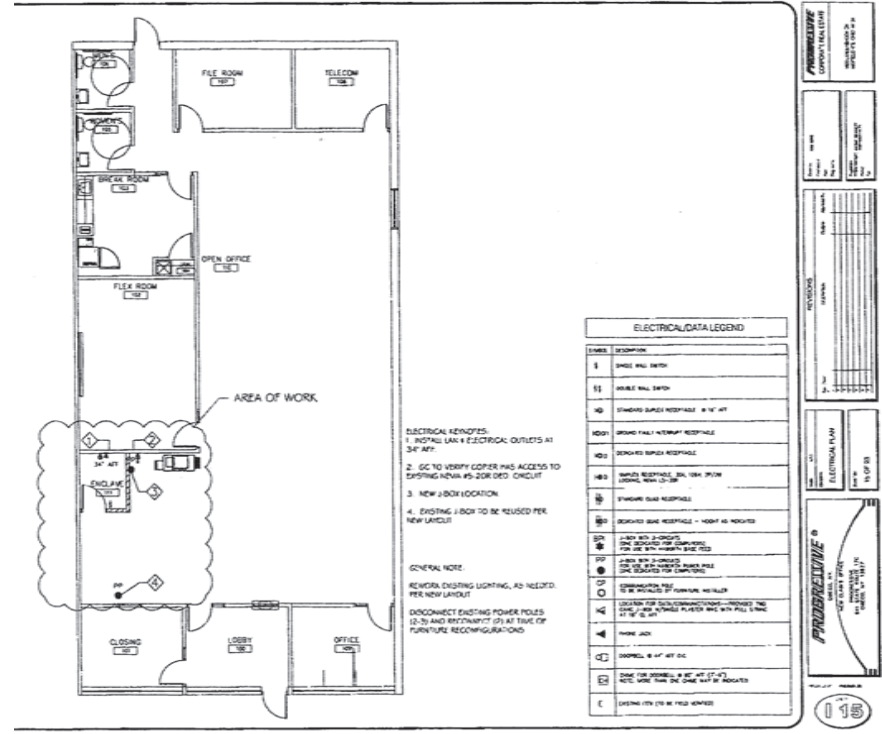
Former Progressive Space In Plaza

941-997 State Route 17C, Owego, NY 13827



ELECTRICAL KEYNOTES:
 1. INSTALL LAN & ELECTRICAL OUTLETS AT 34" AFF.
 2. GC TO VERIFY COOPER HAS ACCESS TO EXISTING NEMA #5-20R DED. CIRCUIT.
 3. NEW J-BOX LOCATION.
 4. EXISTING J-BOX TO BE REUSED PER NEW LAYOUT.

GENERAL NOTE:
 REWORK EXISTING LIGHTING, AS NEEDED PER NEW LAYOUT.
 DISCONNECT EXISTING POWER POLES (2-3) AND RECONNECT (2) AT TIME OF FURNITURE RECONFIGURATIONS.



ELECTRICAL KEYNOTES:
 1. INSTALL LAN & ELECTRICAL OUTLETS AT 34" AFF.
 2. GC TO VERIFY COOPER HAS ACCESS TO EXISTING NEMA #5-20R DED. CIRCUIT.
 3. NEW J-BOX LOCATION.
 4. EXISTING J-BOX TO BE REUSED PER NEW LAYOUT.

GENERAL NOTE:
 REWORK EXISTING LIGHTING, AS NEEDED PER NEW LAYOUT.
 DISCONNECT EXISTING POWER POLES (2-3) AND RECONNECT (2) AT TIME OF FURNITURE RECONFIGURATIONS.

ELECTRICAL/DATA LEGEND	
SYMBOL	DESCRIPTION
1	SINGLE WALL SWITCH
11	DOUBLE WALL SWITCH
10	STANDARD SINGLE RECEPTACLE - 120V 15A
1001	GROUND FAULT INTERRUPTER RECEPTACLE
1002	DETERMINED SINGLE RECEPTACLE
1003	DETERMINED DOUBLE RECEPTACLE
1004	DETERMINED TRIPPLE RECEPTACLE - 120V 15A 3-POLE 3-THROW (3-POLE 3-THROW)
1005	TRIPPLE TRIP RECEPTACLE - 100V 40 AMP
1006	TRIPPLE TRIP RECEPTACLE - 100V 40 AMP
1007	TRIPPLE TRIP RECEPTACLE - 100V 40 AMP
1008	TRIPPLE TRIP RECEPTACLE - 100V 40 AMP
1009	TRIPPLE TRIP RECEPTACLE - 100V 40 AMP
1010	TRIPPLE TRIP RECEPTACLE - 100V 40 AMP
1011	TRIPPLE TRIP RECEPTACLE - 100V 40 AMP
1012	TRIPPLE TRIP RECEPTACLE - 100V 40 AMP
1013	TRIPPLE TRIP RECEPTACLE - 100V 40 AMP
1014	TRIPPLE TRIP RECEPTACLE - 100V 40 AMP
1015	TRIPPLE TRIP RECEPTACLE - 100V 40 AMP
1016	TRIPPLE TRIP RECEPTACLE - 100V 40 AMP
1017	TRIPPLE TRIP RECEPTACLE - 100V 40 AMP
1018	TRIPPLE TRIP RECEPTACLE - 100V 40 AMP
1019	TRIPPLE TRIP RECEPTACLE - 100V 40 AMP
1020	TRIPPLE TRIP RECEPTACLE - 100V 40 AMP
1021	TRIPPLE TRIP RECEPTACLE - 100V 40 AMP
1022	TRIPPLE TRIP RECEPTACLE - 100V 40 AMP
1023	TRIPPLE TRIP RECEPTACLE - 100V 40 AMP
1024	TRIPPLE TRIP RECEPTACLE - 100V 40 AMP
1025	TRIPPLE TRIP RECEPTACLE - 100V 40 AMP
1026	TRIPPLE TRIP RECEPTACLE - 100V 40 AMP
1027	TRIPPLE TRIP RECEPTACLE - 100V 40 AMP
1028	TRIPPLE TRIP RECEPTACLE - 100V 40 AMP
1029	TRIPPLE TRIP RECEPTACLE - 100V 40 AMP
1030	TRIPPLE TRIP RECEPTACLE - 100V 40 AMP
1031	TRIPPLE TRIP RECEPTACLE - 100V 40 AMP
1032	TRIPPLE TRIP RECEPTACLE - 100V 40 AMP
1033	TRIPPLE TRIP RECEPTACLE - 100V 40 AMP
1034	TRIPPLE TRIP RECEPTACLE - 100V 40 AMP
1035	TRIPPLE TRIP RECEPTACLE - 100V 40 AMP
1036	TRIPPLE TRIP RECEPTACLE - 100V 40 AMP
1037	TRIPPLE TRIP RECEPTACLE - 100V 40 AMP
1038	TRIPPLE TRIP RECEPTACLE - 100V 40 AMP
1039	TRIPPLE TRIP RECEPTACLE - 100V 40 AMP
1040	TRIPPLE TRIP RECEPTACLE - 100V 40 AMP
1041	TRIPPLE TRIP RECEPTACLE - 100V 40 AMP
1042	TRIPPLE TRIP RECEPTACLE - 100V 40 AMP
1043	TRIPPLE TRIP RECEPTACLE - 100V 40 AMP
1044	TRIPPLE TRIP RECEPTACLE - 100V 40 AMP
1045	TRIPPLE TRIP RECEPTACLE - 100V 40 AMP
1046	TRIPPLE TRIP RECEPTACLE - 100V 40 AMP
1047	TRIPPLE TRIP RECEPTACLE - 100V 40 AMP
1048	TRIPPLE TRIP RECEPTACLE - 100V 40 AMP
1049	TRIPPLE TRIP RECEPTACLE - 100V 40 AMP
1050	TRIPPLE TRIP RECEPTACLE - 100V 40 AMP
1051	TRIPPLE TRIP RECEPTACLE - 100V 40 AMP
1052	TRIPPLE TRIP RECEPTACLE - 100V 40 AMP
1053	TRIPPLE TRIP RECEPTACLE - 100V 40 AMP
1054	TRIPPLE TRIP RECEPTACLE - 100V 40 AMP
1055	TRIPPLE TRIP RECEPTACLE - 100V 40 AMP
1056	TRIPPLE TRIP RECEPTACLE - 100V 40 AMP
1057	TRIPPLE TRIP RECEPTACLE - 100V 40 AMP
1058	TRIPPLE TRIP RECEPTACLE - 100V 40 AMP
1059	TRIPPLE TRIP RECEPTACLE - 100V 40 AMP
1060	TRIPPLE TRIP RECEPTACLE - 100V 40 AMP
1061	TRIPPLE TRIP RECEPTACLE - 100V 40 AMP
1062	TRIPPLE TRIP RECEPTACLE - 100V 40 AMP
1063	TRIPPLE TRIP RECEPTACLE - 100V 40 AMP
1064	TRIPPLE TRIP RECEPTACLE - 100V 40 AMP
1065	TRIPPLE TRIP RECEPTACLE - 100V 40 AMP
1066	TRIPPLE TRIP RECEPTACLE - 100V 40 AMP
1067	TRIPPLE TRIP RECEPTACLE - 100V 40 AMP
1068	TRIPPLE TRIP RECEPTACLE - 100V 40 AMP
1069	TRIPPLE TRIP RECEPTACLE - 100V 40 AMP
1070	TRIPPLE TRIP RECEPTACLE - 100V 40 AMP
1071	TRIPPLE TRIP RECEPTACLE - 100V 40 AMP
1072	TRIPPLE TRIP RECEPTACLE - 100V 40 AMP
1073	TRIPPLE TRIP RECEPTACLE - 100V 40 AMP
1074	TRIPPLE TRIP RECEPTACLE - 100V 40 AMP
1075	TRIPPLE TRIP RECEPTACLE - 100V 40 AMP
1076	TRIPPLE TRIP RECEPTACLE - 100V 40 AMP
1077	TRIPPLE TRIP RECEPTACLE - 100V 40 AMP
1078	TRIPPLE TRIP RECEPTACLE - 100V 40 AMP
1079	TRIPPLE TRIP RECEPTACLE - 100V 40 AMP
1080	TRIPPLE TRIP RECEPTACLE - 100V 40 AMP
1081	TRIPPLE TRIP RECEPTACLE - 100V 40 AMP
1082	TRIPPLE TRIP RECEPTACLE - 100V 40 AMP
1083	TRIPPLE TRIP RECEPTACLE - 100V 40 AMP
1084	TRIPPLE TRIP RECEPTACLE - 100V 40 AMP
1085	TRIPPLE TRIP RECEPTACLE - 100V 40 AMP
1086	TRIPPLE TRIP RECEPTACLE - 100V 40 AMP
1087	TRIPPLE TRIP RECEPTACLE - 100V 40 AMP
1088	TRIPPLE TRIP RECEPTACLE - 100V 40 AMP
1089	TRIPPLE TRIP RECEPTACLE - 100V 40 AMP
1090	TRIPPLE TRIP RECEPTACLE - 100V 40 AMP
1091	TRIPPLE TRIP RECEPTACLE - 100V 40 AMP
1092	TRIPPLE TRIP RECEPTACLE - 100V 40 AMP
1093	TRIPPLE TRIP RECEPTACLE - 100V 40 AMP
1094	TRIPPLE TRIP RECEPTACLE - 100V 40 AMP
1095	TRIPPLE TRIP RECEPTACLE - 100V 40 AMP
1096	TRIPPLE TRIP RECEPTACLE - 100V 40 AMP
1097	TRIPPLE TRIP RECEPTACLE - 100V 40 AMP
1098	TRIPPLE TRIP RECEPTACLE - 100V 40 AMP
1099	TRIPPLE TRIP RECEPTACLE - 100V 40 AMP
1100	TRIPPLE TRIP RECEPTACLE - 100V 40 AMP



3630 George F. Highway Endwell, NY 13760

The information submitted herein is not guaranteed. Although obtained from reliable resources, it is subject to errors, omissions, prior sale and withdrawal from the market without notice. Broker has made no investigation and makes no representation of the property.



Karen Klecar
 Licensed Real Estate Associate Broker

607.624.0143

KarenKlecar@hannacre.com